

## ELETTROPOMPE SOMMERSE submersible pumps

# STK

### ELETTROPOMPE SOMMERGIBILI PERIFERICHE PERIPHERAL SUBMERSIBLE PUMPS

#### APPLICAZIONE

- Elettropompa monoblocco ideale per cisterne e depositi in ambiente civile. Ideale anche per piccole irrigazioni.

#### POMPA

- Corpo pompa in tecnopolimero
- Buona prevalenza e buone portate
- Massima temperatura liquido pompato: +35°C
- Massima capacità d'immersione: 7Mt.
- Massimo diametro particelle: 1mm.

#### MOTORE

- Motore con avvolgimento in rame
- Protezione termica integrata
- Classe di isolamento: F
- Classe di protezione: IPX8

#### APPLICATION

- This pump is mainly used for use in traditional wells, water deposits and collection tanks. Also suitable for small scale irrigation systems.

#### PUMP

- PPO pump body
- Good head with good delivery
- Max. liquid temperature: +35°C
- Max. immersion depth: 7m
- Max. diameter of particle: 1mm

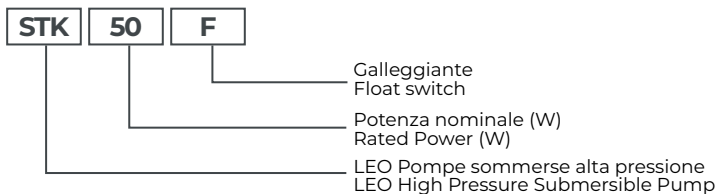
#### MOTOR

- Motor with copper winding
- Built-in thermal protector
- Insulation class: F
- Protection class: IPX8

## SALENTO



### Codici identificativi | Identification Codes

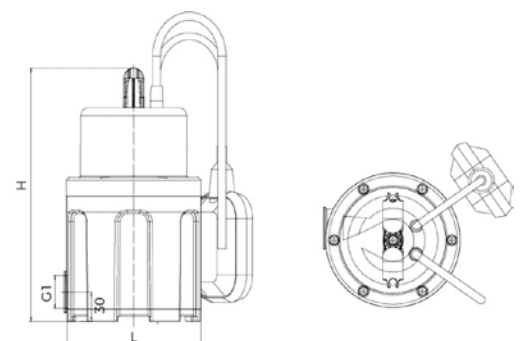


### Dati tecnici | Technical Data

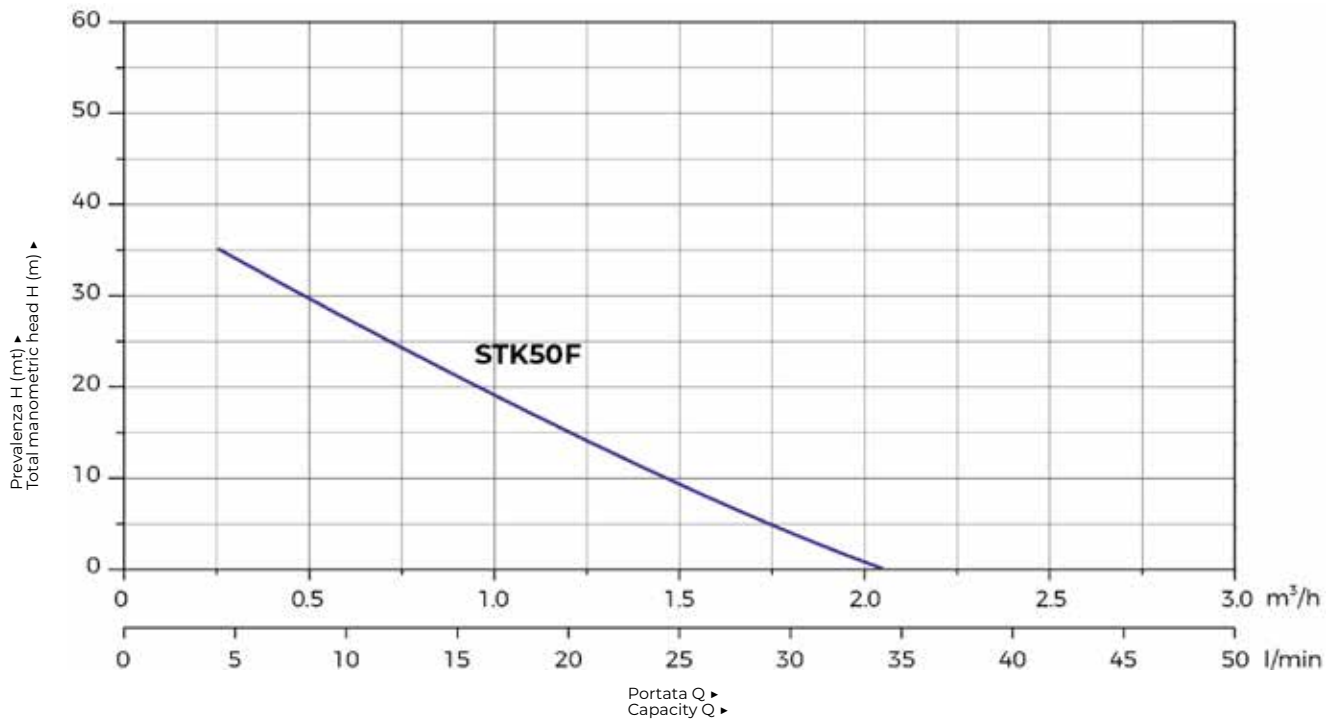
Modello Model	Potenza Power		Ampere	Qm <sup>3</sup> /h	0	0.3	0.6	0.9	1.2	1.5	1.8	2.1	Codice Code	€ cad € each
	kW	HP			QL/min	0	5	10	15	20	25	30		
<b>STK50F</b>	0.37	0.5	2.50	H (mt)	40	35	30	25	20	15	10	5	<b>10STK50F</b>	<b>133,00</b>

### Dimensioni | Dimension

Modello Model	DN	L (mm)	H (mm)
<b>STK50F</b>	1"	135	255

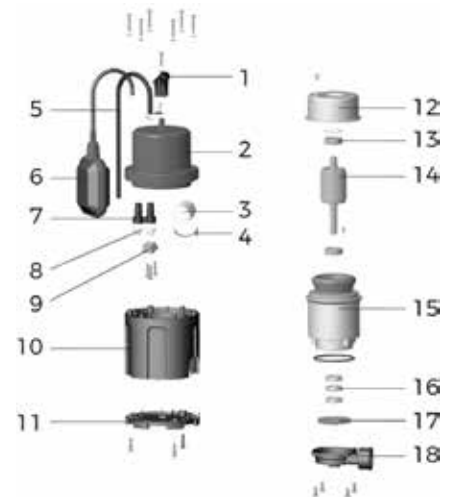


## Diagramma prestazioni | Hydraulic Performance Curve



## Descrizione componenti | Materials Table

Pos.	Part.	Mat.
1	Manico Handle	PP-GF30
2	Coperchio Top cap	PP-GF30
3	Condensatore Capacitor	
4	Supporto condensator Capacitor clamp	ABS
5	Cavo Cable	
6	Galleggiante Float switch	
7	Pressacavo Cable jacket	EPDM
8	Pressacavo Cable clamp	PA6-GF25
9	Rondella passacavo Cable plate	PA6-GF25
10	Corpo pompa Pump body	PP-GF30
11	Piatto di chiusura Pump cover	PP-GF30
12	Supporto cuscinetti Bearing cover	ADC12
13	Cuscinetto Bearing	
14	Rotore Rotor	
15	Statore Stator	
16	Anello di tenuta Framework seal	
17	Girante Impeller	HPb59-1
18	Bocca di mandata Pump body subassembly	ADC12



## Dimensioni imballo | Package information

Modello Model	GW (Kg)	L (mm)	W (mm)	H (mm)
<b>STK50F</b>	4.12	150	150	270

